

## RxView™ and RxHighlight™

### One viewer for all file formats!

**RxView** is a powerful multi-format viewer, providing visualization and printing capabilities to a wide range of 2D and 3D formats – without having to invest in the original design software.

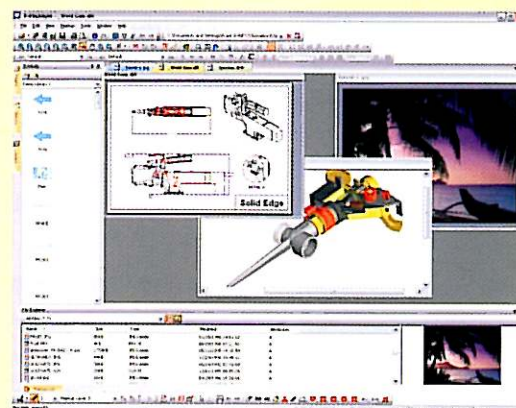
**RxHighlight** adds advanced functions like redlining, markup, file conversion and batch printing/ batch conversion to the Viewer, allowing multiple users to collaborate and share information more efficiently throughout the organization. RxHighlight improves the revision control, shortens the time used for engineering changes and improves the feedback process in the organization. It is designed for network environments, with administrative tools and access control.

With the use of Rasterex' viewing technology, manufacturing, engineering, design and construction companies will realize substantial cost savings and productivity gains.

### RxView displays and prints more than 250 different file formats

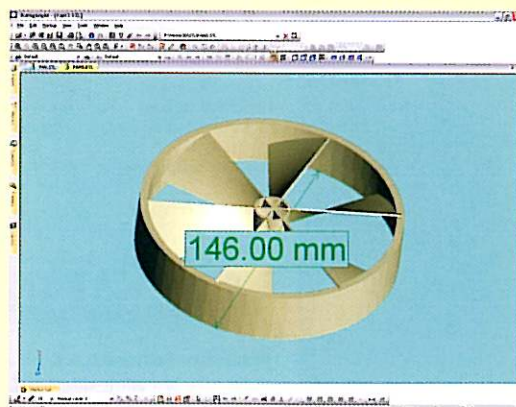
- 2D CAD Drawings
- 3D CAD Models and draft files
- Adobe PDF
- Office formats (Word, Excel, Powerpoint)
- Scanned raster files – also large formats
- Image files (TIFF, GIF, JPEG etc.)
- Hybrid formats
- Graphics formats
- And many more...

*See separate specification for all supported formats*

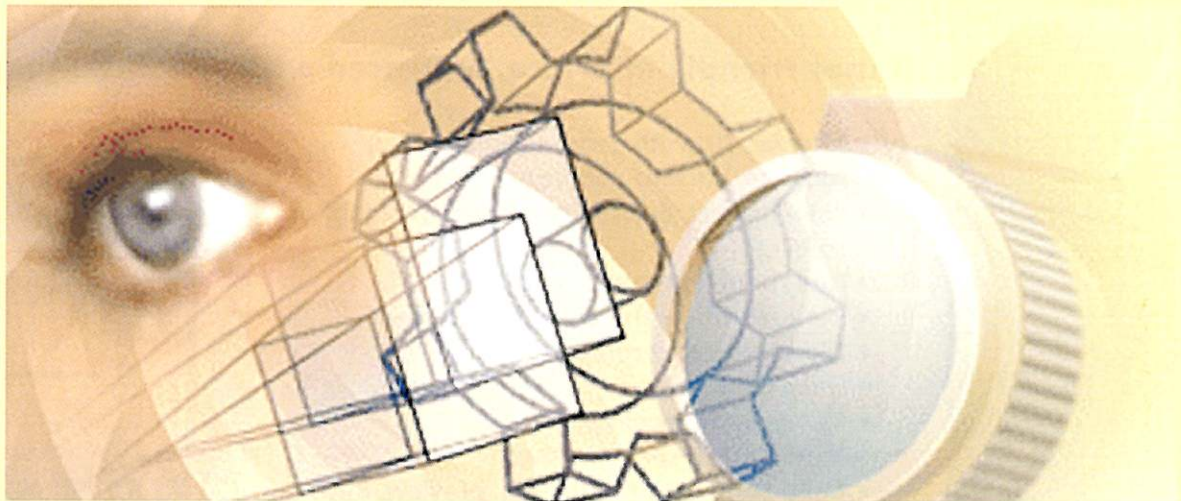


### RxView supports all the most popular 3D formats

- CATIA, Pro/Engineering, SolidWorks, Solid Edge, ACIS/SAT, IGES, STEP, VDA-FS, STL, etc.
- Parts, Assembly or Drafts
- Fast load, review, measure, spin and rotate
- Real-time 3D rendering
- Advanced interactive cross-sectioning
- Assembly structure visualization
- 3D navigation tools
- Select wireframe or rendered view
- etc...







## RxView™ and RxHighlight™ One viewer for all file formats!

**RxView** is a powerful multi-format viewer, providing visualization and printing capabilities to a wide range of 2D and 3D formats – without having to invest in the original design software.

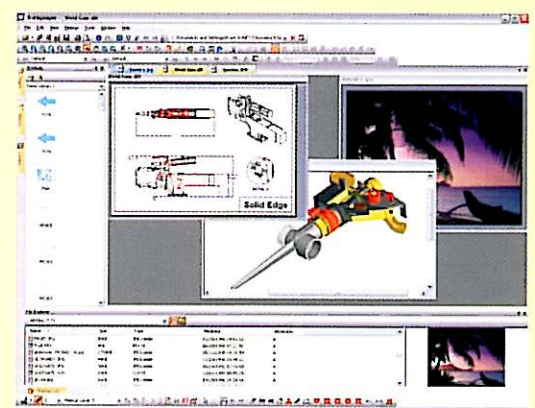
**RxHighlight** adds advanced functions like redlining, markup, file conversion and batch printing/ batch conversion to the Viewer, allowing multiple users to collaborate and share information more efficiently throughout the organization. RxHighlight improves the revision control, shortens the time used for engineering changes and improves the feedback process in the organization. It is designed for network environments, with administrative tools and access control.

With the use of Rasterex' viewing technology, manufacturing, engineering, design and construction companies will realize substantial cost savings and productivity gains.

### RxView displays and prints more than 250 different file formats

- 2D CAD Drawings
- 3D CAD Models and draft files
- Adobe PDF
- Office formats (Word, Excel, Powerpoint)
- Scanned raster files – also large formats
- Image files (TIFF, GIF, JPEG etc.)
- Hybrid formats
- Graphics formats
- And many more...

*See separate specification for all supported formats*



### RxView supports all the most popular 3D formats

- CATIA, Pro/Engineering, SolidWorks, Solid Edge, ACIS/SAT, IGES, STEP, VDA-FS, STL, etc.
- Parts, Assembly or Drafts
- Fast load, review, measure, spin and rotate
- Real-time 3D rendering
- Advanced interactive cross-sectioning
- Assembly structure visualization
- 3D navigation tools
- Select wireframe or rendered view
- etc...

